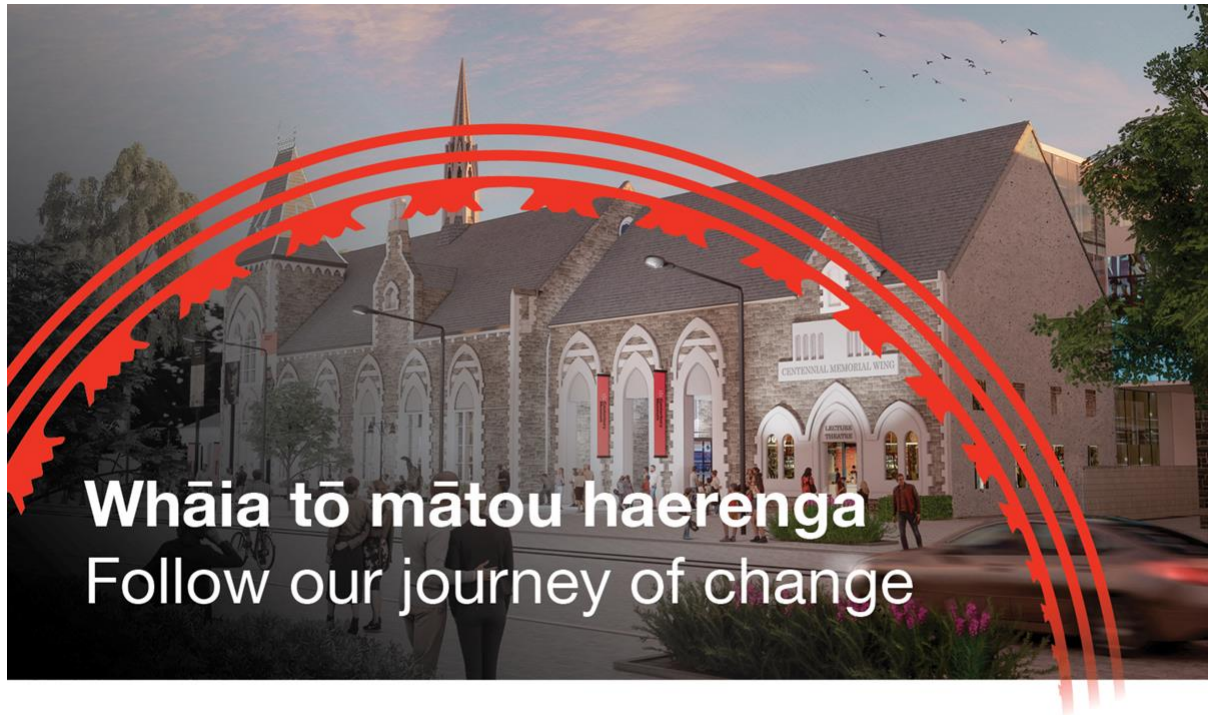


Email not displaying properly? [Click here](#) to view online



'As Clear As Crystal' by Jason Gulley. 'Wildlife Photographer of the Year' opens 19 September at the 'Canterbury Museum Pop-Up'.



Part of the basement for the redeveloped Museum has already been excavated and is being prepared for the first big concrete pour.

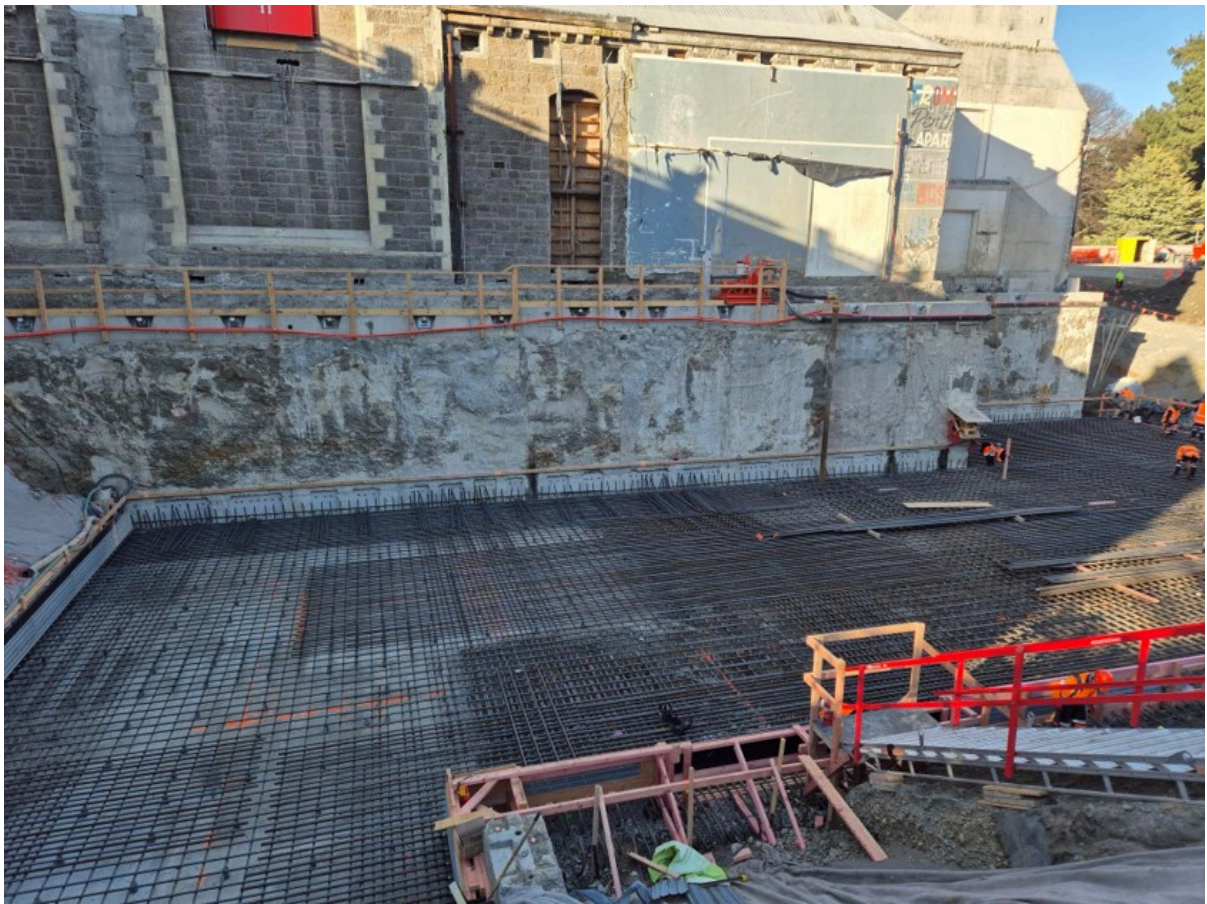
From the Director | Tumuaki

Kia ora koutou

You can have a front row seat to the redevelopment of Canterbury Museum using a special livestream on our website. Our neighbours Christ's College very kindly allowed us to mount a webcam on the top of their roof, which offers a fascinating live view of the construction site on Rolleston Avenue.

The livestream, which updates every 15 minutes, has captured the demolition of the tired twentieth-century Museum buildings, the construction of the outer basement underground wall and now the ever-expanding excavation of the new basement. [Click here](#) and you will see construction workers preparing for the first concrete pour for the basement floor, which is due in a few weeks.

One thing the camera doesn't show is the incredible engineering work that has been going on, hidden from sight, beneath the Robert McDougall Gallery. More than 300 micropiles have been installed to temporarily support the Robert McDougall Gallery while a new basement is excavated underneath. You can watch a great video about that process [here](#).



Construction workers have completed excavation for part of the 6-metre deep basement for the redeveloped Museum.

It's great to see work forging ahead on the redevelopment. Museum staff are also busy preparing the many new exhibitions for our redeveloped buildings. If you haven't already seen it, [watch this great video explaining what Museum staff are doing while our building is being redeveloped](#). We're excited to reveal the new exhibitions when the redeveloped Museum opens in 2029.

We are also excited to have the popular *Wildlife Photographer of the Year* exhibition return to the *Canterbury Museum Pop-Up* from 19 September with a fresh batch of 100 spectacular animal images from around the world. Head along to see astonishing sights like a manatee and her offspring enjoying a restored Florida river and a white stoat leaping into the air in the French Alps.

There's also plenty of school holiday fun for children to enjoy with Museum supported events at libraries across Canterbury. You can find out more about those below.

Lots happening and a lot to look forward to as we head into the spring with a new exhibition and the redevelopment making great progress.

Ngā mihi nui
Anthony Wright



The mane attraction

Wildlife Photographer of the Year

The popular *Wildlife Photographer of the Year* exhibition is returning to the *Canterbury Museum Pop-Up* from 19 September with a fresh batch of 100 spectacular animal images from around the world.

The exhibition, on loan from the Natural History Museum in London, gives visitors the chance to see a grizzly bear fishing in a sub-zero Canadian river, the nocturnal glow of a Chilean volcano and the intimate world of tiny insects. The stunning images on display include a manatee and her adorably rotund calf floating in a Florida river, a jaguar sinking her teeth into a caiman in Brazil and a group of seals taking a nap in the ice floes of the Antarctic.

Wildlife Photographer of the Year is the most prestigious photography event of its kind, providing a global platform that has showcased some of the best photography talent from around the world for 60 years.

We'll also be running our *Amazing Animals* photography competition again, which is open to all Canterbury photographers. Send us your best wildlife photos to be in with the chance of winning a fantastic prize.

Canterbury Museum Pop-Up, 66 Gloucester Street, Christchurch. Exhibition runs 19 September to 1 February. Free entry; donations appreciated.

Image: *Stormy Scene* by William Fortescue

[See more →](#)



School holidays activities

Fossil Fun

Calling all up and coming palaeontologists! The Museum team will be at libraries across Christchurch during the September school holidays, sharing our love of dinosaurs and fossils at free drop-in events.

[See when and where →](#)



What we do

Mammoth Museum Mahi

What are Canterbury Museum staff doing while their building is being redeveloped?

Watch and read more about our Mammoth Mahi running three venues, cataloguing millions of objects and preparing for a redeveloped Museum with 50% more exhibition space. It's a lot of work to create an extraordinary new Museum and keep the place running.

[Watch the video →](#)

More holiday fun

Bug Bioblitz

Curious about what critters might be living in your garden? Join experts from Canterbury Museum at Hurunui Memorial Library to learn about the diversity, richness and importance of bugs. Then collect some creepy crawlies and check them out under our microscope.



[See more →](#)



Amazing engineering

A Gallery On Stilts

An extraordinary piece of engineering is unfolding deep underground, hidden from the world.

Beneath the Robert McDougall Gallery on the edge of Christchurch Botanic Gardens, a team of workers and engineers are preparing to put the much-loved building on stilts.

The 1930s Robert McDougall Gallery is being revamped and strengthened as part of the redevelopment of Canterbury Museum's Rolleston Avenue site. It will link to a new building that will wrap around the Museum's restored heritage buildings. In the Gallery we'll display artworks from the Museum collection and other cultural institutions. Curators are poring through the Museum collection, uncovering lost gems that will go on display for the first time in many decades when the Museum reopens in 2029.

[Watch the video →](#)

Subscribe to our stories

Be the first

... to read about our redevelopment journey and treasures from the collection by signing up for Museum Stories delivered straight to your inbox.

[Sign up here →](#)



Canterbury Museum Pop-Up

66 Gloucester Street
Christchurch 8013
New Zealand

Canterbury Museum

Private Bag 4744
Christchurch 8154
New Zealand

Website

www.canterburymuseum.com

Email

info@canterburymuseum.com

Phone

+64 3 366 5000



Unless otherwise stated, all content on this website is licensed under a Creative Commons Attribution Non Commercial licence.